

DATA DISPLAY

1. The table shows the information about a group of children

	Can swim	Cannot swim
Boys	16	4
Girls	19	6

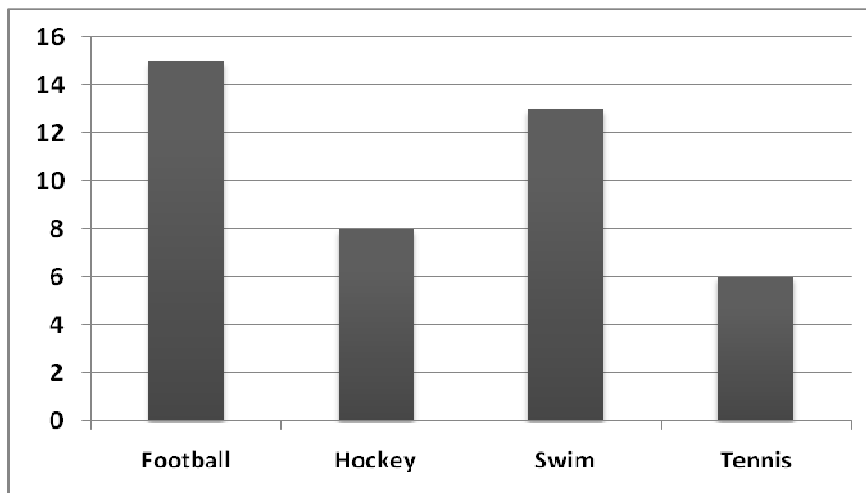
(a) How many boys can swim?

.....

(b) How many cannot swim altogether?

.....

2. A group of students were asked which sport they did most. The bar charts shows the results.



(a) How many students swim?

.....

(b) How many students were asked altogether?

.....

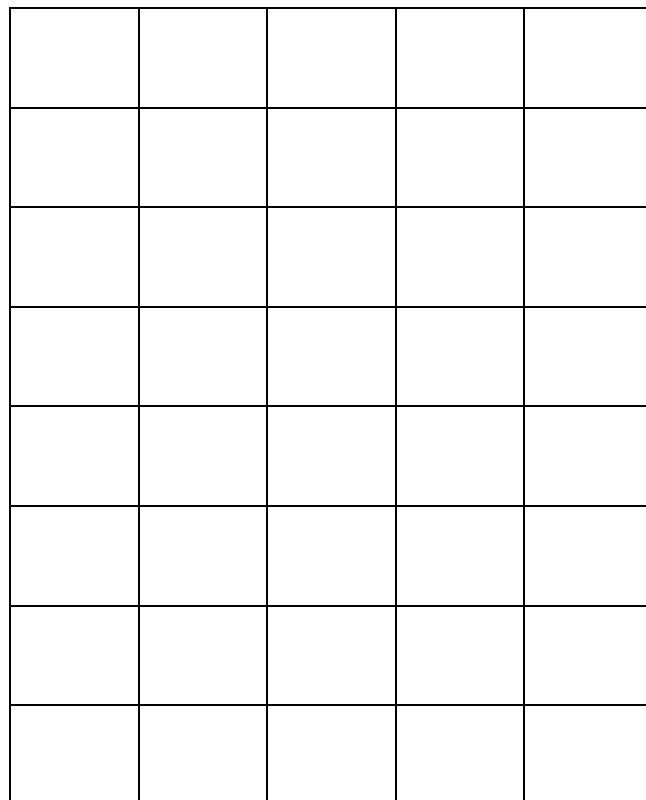
3. 20 students were asked how many children were in their family? Complete the tally chart for this data.

1 2 3 2 4 5 2 3 3 1
2 2 4 3 1 3 1 3 3 2

Children	Tally	Frequency
1		
2		
3		
4		
5		

(a) Which was the most popular number of children?

(b) Use the grid below to draw a bar chart to show this information.



1 2 3 4 5 No. of children